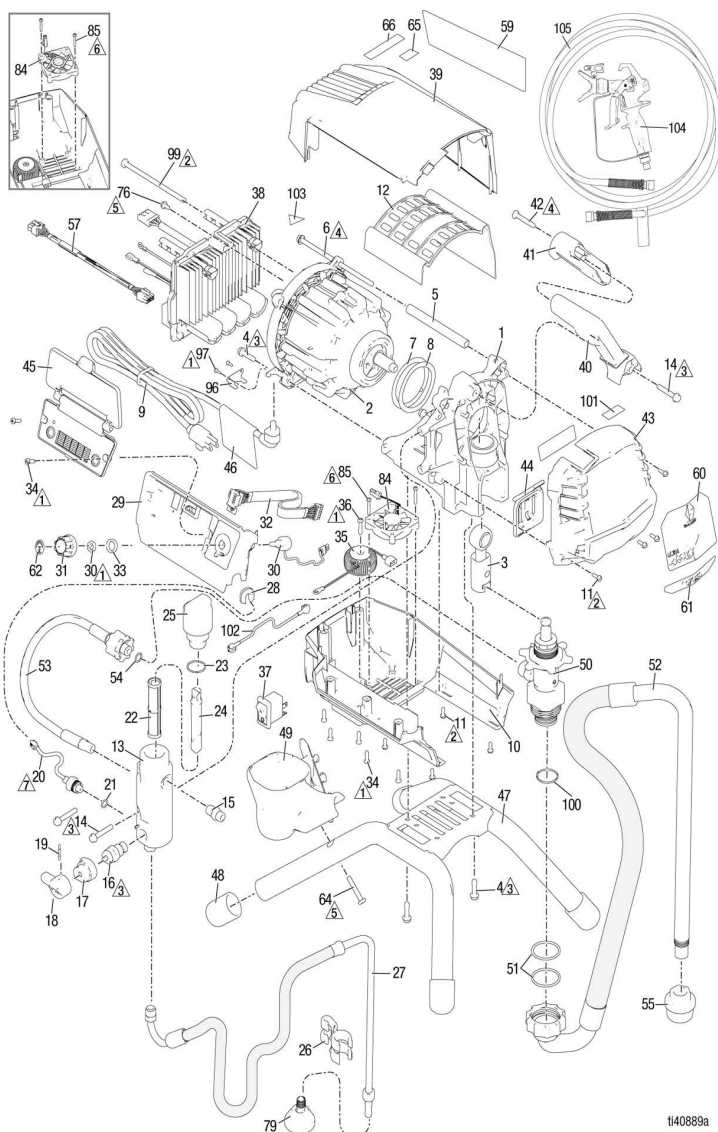
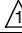
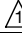
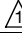
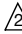
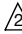
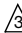
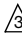


Parts

Stand Models 490 XT, 495 XT



t140889a

Ref.	Torque	Ref.	Torque	Ref.	Torque
	12-16 in-lb (1.4-1.8 N•m)		70-75 in-lb (7.9-8.5 N•m)		37-43 ft-lb (50.2-58.3 N•m)
	20-25 in-lb (2.3-2.8 N•m)		40-45 in-lb (4.5-5.1 N•m)		
	140-160 in-lb (15.8-18.1 N•m)		8-10 in-lb (0.9-1.1 N•m)		

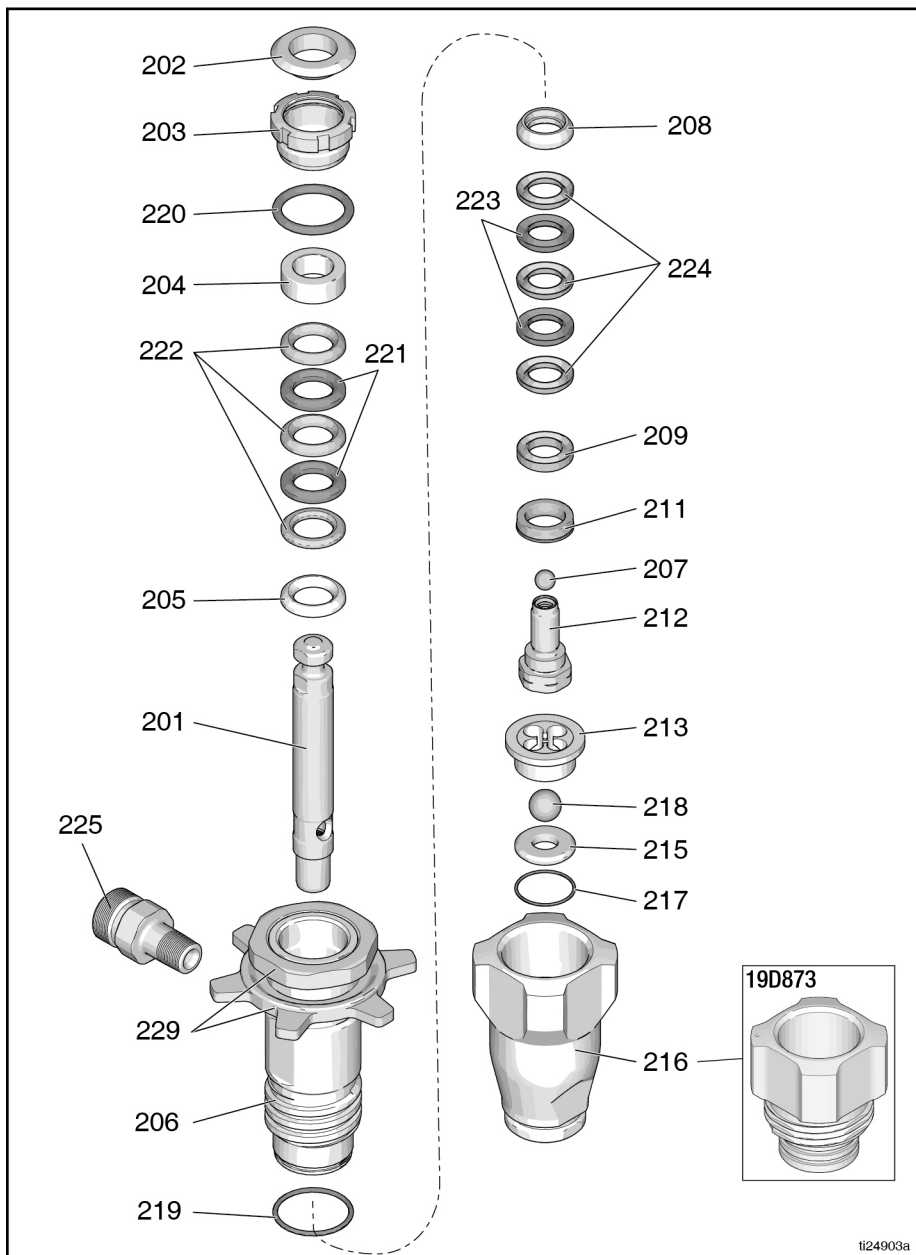
Stand Model Parts List 490 XT, 495 XT

Ref.	Part	Description	Qty.	Ref.	Part	Description	Qty.
1	20B413	HOUSING, pump with sleeve, <i>includes 4, 7, 8</i>	1	39	2002367	110V UK	
2		MOTOR, Graco, XT, <i>includes 4, 5, 6, 7, 8</i>	1	40	20B443	SHIELD, motor, top, painted, <i>includes 34</i>	1
	19C924	490		41	20B429	HANDLE, sprayer, <i>includes 14, 41, 42</i>	1
	19D860	495		42	19C891	GRIP, handle	1
3	20B414	ROD, connecting, SM electrical assembly	1	43	19D260	SCREW, mach, pan hd., torx	1
4	20B534	SCREW, mach, hex washer hd.	6	44	20B430	COVER, front, painted, <i>includes 11</i>	1
5	20B415	SPACER, tie rod, motor, <i>includes 6</i>	2	45	17C484	COVER, PC Pro pump rod	1
6	19C928	SCREW, cap, 1/4-20 x 6	2	46 ▲	20B431	MODULE, display only, <i>includes 34</i>	1
7	19C534	SPRING, wave washer	1		20B432	MODULE, Bluelink with display, <i>includes 34</i>	1
8	19C535	SHIM	1	47	See pg. 48	LABEL, warning, English, French, Spanish	1
9	See pg. 48	CORD, power, lighted, <i>includes 46</i>	1	48	20B433	FRAME, standmount, <i>includes 4, 48</i>	1
10	20B421	SHIELD, motor, bottom, <i>includes 11, 36, 37, 85</i>	1	49	19D306	CAP, leg	4
11	2001659	SCREW, mach, slot hex washer hd.	8	50	20B434	CUP, drip, <i>includes 64</i>	1
12	19D292	COVER, motor	1	51	19D873	PUMP, Displacement, small electric, <i>includes 51, 100</i>	1
13	20B440	MANIFOLD, fluid, <i>includes 14</i>	1	52	16N901	O-RING	2
14	117493	SCREW, mach, hex washer hd.	3	53	20B438	HOSE, suction, assembly, <i>includes 51, 55, 100</i>	1
15	162453	FITTING, 1/4 NPSM x 1/4 NPT	1	54	20B439	HOSE, coupled, <i>includes 54</i>	1
16	235014	KIT, replacement, valve, drain, <i>Includes 17, 18, 19</i>	1	55	16H137	O-RING	1
17	224807	BASE, valve	1	56	246385	STRAINER	1
18	187625	HANDLE, valve, drain	1	57	19B596	HARNESS, encoder	1
19	111600	PIN, grooved	1	58	See pg. 48	LABEL, brand, side	1
20	20B422	TRANSDUCER, pressure control, <i>includes 21, 28</i>	1	59	See pg. 48	LABEL, brand, front upper	1
21	111457	PACKING, o-ring	1	60	20B551	LABEL, Xtreme Torque	1
22	246384	FILTER, fluid, 60 mesh	1	61	19D678	LABEL, control	1
23	117828	O-RING, PTFE, encapsulated	1	62	19D788	SCREW, plasttite, #10 hex wash hd.	1
24	15B071	INSERT, filter	1	63	16D576	LABEL, made in USA	1
25	15G456	CAP, filter	1	64	See pg. 48	LABEL, A+ service, Home Center	1
26	276888	CLIP, drain line	1	65	114391	SCREW, grounding	2
27	246381	HOSE, drain, <i>includes 26, 79</i>	1	66	241920	DEFLECTOR, threaded	1
28	19C988	GROMMET, transducer	1	67	19D790	FAN, 5V DC, square	1
29	20B424	SHIELD, motor, side, painted, <i>includes 28, 34</i>	1	68	19D789	SCREW, plasttite, #6 torx pan hd.	2
30	20B425	POTENTIOMETER, encoder	1	69	20B451	SCREW, hex hd.	2
31	2002370	KNOB, potentiometer, assembled, <i>includes 33, 62</i>	1	70	117117	O-RING	1
32	19C527	HARNESS, display/pot	1	71	See pg. 48	LABEL, Xtreme Torque Advantage	1
33	15C973	GASKET	1	72	See pg. 50	WIRE, jumper, (220-240V, 110V UK models only)	1
34	19D307	SCREW, mach, torx pan hd.	7	73 ▲	2001766	LABEL, moving parts	1
35	See pg. 48	FILTER	1	74	See pg. 48	GUN	1
36	131172	SCREW, mach,	1	75	See pg. 48	HOSE	1
37	2002366	SWITCH, rocker	1				
38		BOARD, control, assembly, <i>includes 76, 99</i>	1				
	20B427	100-120V					
	20B428	220-240V					

▲ Replacement safety labels, tags, and cards are available at no cost.

Parts

Models 17C487, 17C488, 17C489, 17C721, 17M992, 24Z731, 19D873



1124903a

Parts List

Models 17C487, 17C488, 17C489, 17C721, 17M992, 24Z731, 19D873

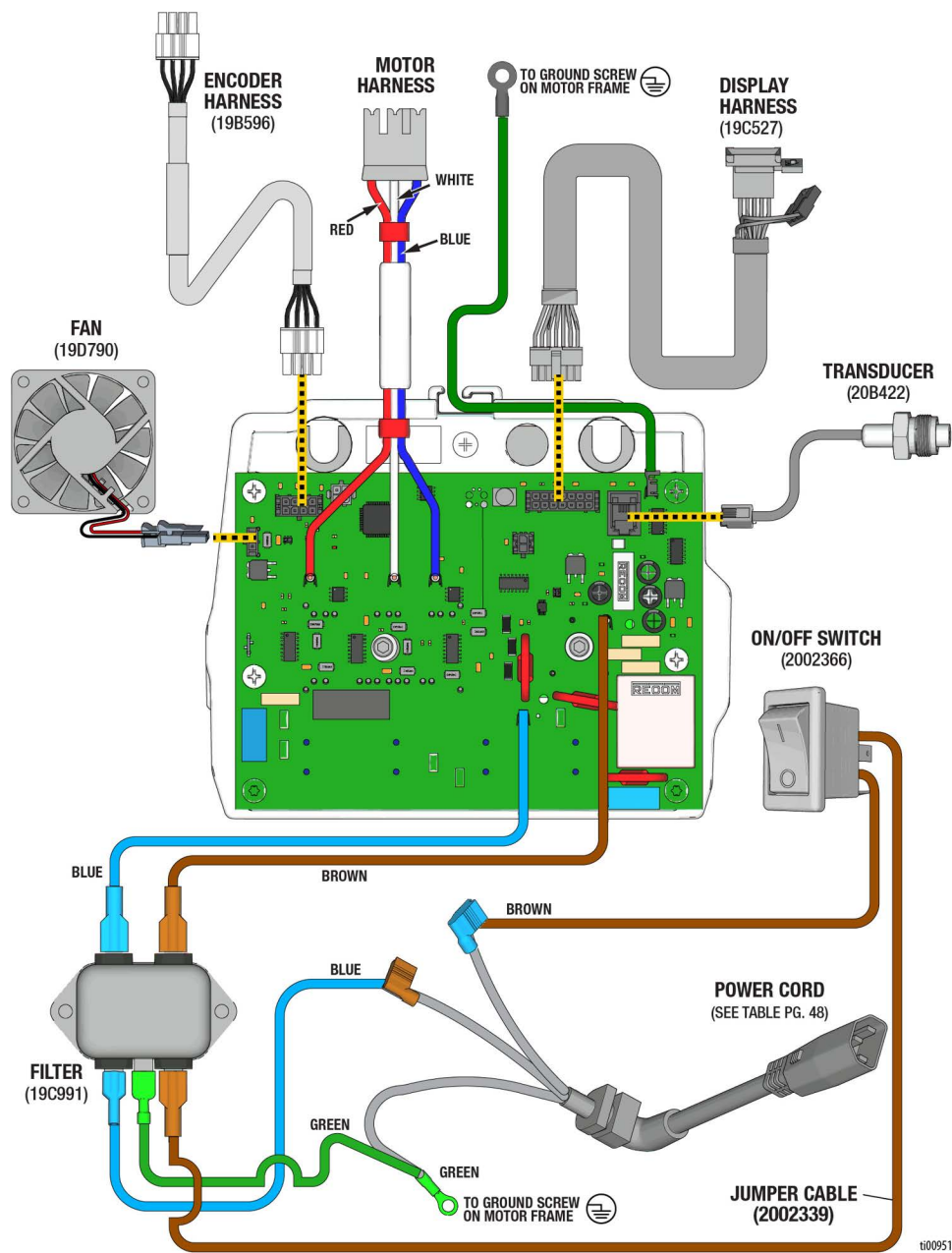
Ref.	Part	Description	Qty.	Ref.	Part	Description	Qty.
201		ROD, displacement, <i>includes 212</i>	1	15B611		Models: 17C487, 17C488, 17C489, 17C721, 17M992, 24Z731	
	24W617	Models: 17C487, 17C488, 17C489, 17C721, 17M992, 24Z731		19D287		Models: 19D873	
	2004762	Model: 19D873		217*❖	15B112	PACKING, o-ring (0.941 in. OD)	1
202*	180656	BUTTON, plug	1	218*❖	105445	BALL, sst, 0.5000 in.	1
203	193047	NUT, packing	1	219*	17V093	PACKING, o-ring	1
204*	176757	GLAND, female, throat	1	220*	160516	O-RING	1
205*	176754	GLAND, male throat	1	221*	176755	V-PACKING, leather, throat	2
206		CYLINDER, pump <i>includes 219, 229</i>	1	222*	192710	V-PACKING, throat, V-Max™ UHMWPE, blue	3
	24W619	Models: 17C487, 17C488, 17C489, 17C721, 17M992, 24Z731		223*	176749	V-PACKING, leather, piston	2
	2004756	Model: 19D873		224*	192712	V-PACKING, piston, V-Max™ UHMWPE, blue	3
207*	105444	BALL, sst, 0.3125 in.	1				
208*	195129	GLAND, male piston	1	225	17C231	FITTING, pump, QD, 1/4 npt	1
209*	180073	GLAND, female, piston	1			Models: 17C487, 17C488, 17C489, 17C721	
211*	15G234	GUIDE, piston	1		162453	FITTING, 1/4 npt Model 17M992	1
212	239937	VALVE, piston (included with 201)	1	229		NUTS, retaining, not sold separately	
213❖	15C011	GUIDE, ball	1				
215❖	246429	KIT, seat, carbide <i>includes 213, 217 and 218</i>	1				
216		VALVE, intake housing	1				

* - Also included in Kit 18B260 (formerly
part number 244194)

❖ - Also included in Kit 246429

Wiring Diagrams

220-240V



ti00951a